

FUND OVERVIEW

Investment Objective

To provide unit holders with capital growth opportunities through investment in securities in the Malaysian equity market.

Potential Investor

- ASN Equity Malaysia is suitable for:
- Investors with high risk tolerance;
 - Investors with a preference for capital appreciation; and/or
 - Investors who understand the risks and returns principles of investing in local capital market.

MARKET REVIEW

Global markets continued its positive trend for the third consecutive month in June, with the FTSE All-World Index rising to 4.48%. Year-to-date, global markets have seen an overall positive performance of 10.54%. Americas was the best performing region in June, with the FTSE Americas Index increased by 5.06%. The highest performing country index for the month was FTSE Korea Index at 16.90%. Conversely, the worst performing country index was the FTSE Indonesia Index, finishing the month down at -4.76%. Malaysia’s KLCI rose by 24.61 index points during the month, reversing last month’s drop with a positive performance of 1.63%. Within the size segments of the FTSE Bursa Malaysia EMAS Index, KLCI was the best performer in the FTSE Bursa Malaysia Index Series, overshadowing the poor performance of FTSE Bursa Malaysia Small Cap Index of -0.90%. The FTSE Bursa Malaysia EMAS Index soared 1.31%. The top ten constituents of the FTSE Bursa Malaysia KLCI account for 66.09% of the index, as compared to 46.11% for FTSE Bursa Malaysia EMAS Index and 18.21% for the FTSE Bursa Malaysia Small Cap Index. Energy was the best performing sector in the FTSE Bursa Malaysia KLCI Index, registering 10.30% with Utilities being the second-best performer at 9.98% Conversely, Health Care was the worst performing sector followed by Financials, at -1.16% and -0.76% respectively. With an index weighting of 41.09% and 6 constituents, Financials is the largest industry in the FTSE Bursa Malaysia KLCI. This compares to a weight of 29.86% and 10 constituents in the FTSE Bursa Malaysia EMAS Index. Industrial Goods & Services is the largest industry in the FTSE Bursa Malaysia Small Cap with an index weighting of 14.63% and 33 constituents.

Source: Novagmi Analytics and Advisory Sdn Bhd

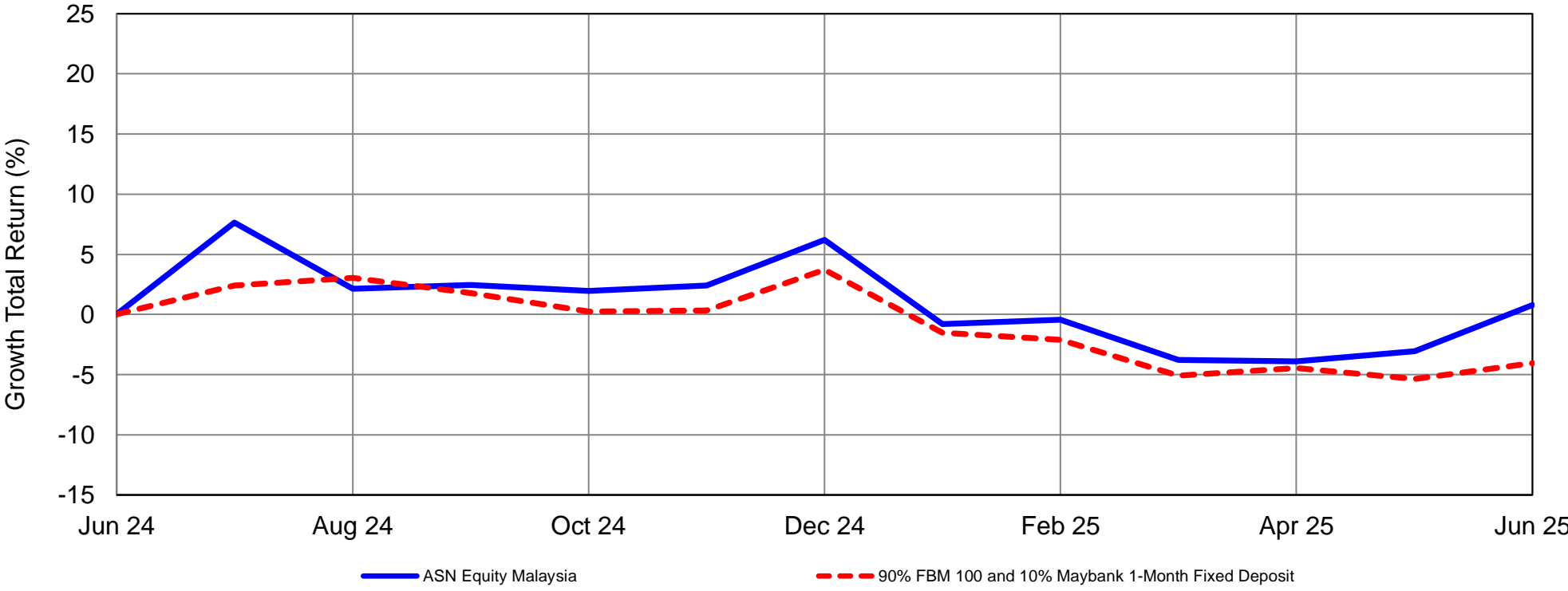
FUND PERFORMANCE

Fund and Benchmark Performance

	Cumulative Returns (%)					Annualised Returns (%)		
	1 month	3 months	6 months	1 year	Since Inception	3 years	5 years	10 years
Fund	3.97	4.77	-5.07	0.80	39.17	-	-	-
Benchmark	1.39	1.12	-7.49	-4.04	11.66	-	-	-

Source: Novagmi Analytics and Advisory Sdn Bhd

1 Year Growth Total Return from 30 June 2024 to 30 June 2025



The value of units may go down as well as up. Past performance is not indicative of future performance.

Source: Novagmi Analytics and Advisory Sdn Bhd

PORTFOLIO INFORMATION

Top 10 Holdings[#]

Tenaga Nasional Bhd	9.15%
Malayan Banking Bhd.	6.39%
Gamuda Bhd.	5.82%
RHB Bank Bhd.	4.16%
CIMB Group Holdings Bhd	4.15%
Public Bank Bhd	4.13%
IJM Corporation Berhad	3.74%
Sunway Bhd.	3.32%
Fraser & Neave Holdings Bhd.	3.27%
YTL Power International Bhd.	3.10%

Sector Allocation[#]

Financials	21.84%
Industrials	18.30%
Cash & Others	17.34%
Utilities	15.28%
Consumer Staples	11.34%
Information Technology	4.85%
Real Estate	4.47%
Energy	1.91%
Communication Services	1.72%
Health Care	1.63%
Consumer Discretionary	1.32%

[#] As percentage of NAV. The sector allocation is based on GICS sector classification. Please note that all figures are subject to frequent changes on a daily basis.

Source: Amanah Saham Nasional Berhad

Where a distribution is declared, investors are advised that following the distribution, the NAV per unit will be reduced from cum-distribution NAV to ex-distribution NAV.

The Master Prospectus of ASNB dated 1 February 2020, the First Supplementary Master Prospectus dated 20 October 2021, the Second Supplementary Master Prospectus dated 1 April 2023, the Third Supplementary Master Prospectus dated 1 December 2023, the Fourth Supplementary Master Prospectus dated 31 December 2024, the Prospectus of ASN Imbang (Mixed Asset Balanced) 3 Global dated 16 September 2020, the First Supplementary Prospectus of ASN Imbang (Mixed Asset Balanced) 3 Global dated 20 October 2021, the Second Supplementary Prospectus of ASN Imbang (Mixed Asset Balanced) 3 Global dated 1 April 2023, the Third Supplementary Prospectus of ASN Imbang (Mixed Asset Balanced) 3 Global dated 1 December 2023, the Prospectus of ASN Equity Global dated 1 September 2021, the First Supplementary Prospectus of ASN Equity Global dated 1 April 2023, the Second Supplementary Prospectus of ASN Equity Global dated 1 December 2023, the Prospectus of ASN Sukuk dated 25 November 2022, the First Supplementary Prospectus of ASN Sukuk dated 1 April 2023 and the Second Supplementary Prospectus of ASN Sukuk dated 1 September 2024 (“Prospectuses”), have been registered with the Securities Commission Malaysia (“SC”).

Please read and understand the content of the Prospectuses together with the Product Highlights Sheets which are available at the ASNB website (www.asnb.com.my), branches and agents. The unit will be issued upon receipt of the registration form referred to and accompanying the Prospectuses. Before investing, please consider the risk of investing as well as the fees and charges involved. Unit prices and distribution payable, if any, may go down as well as up. The past performance of a fund should not be taken as indicative of its future performance.